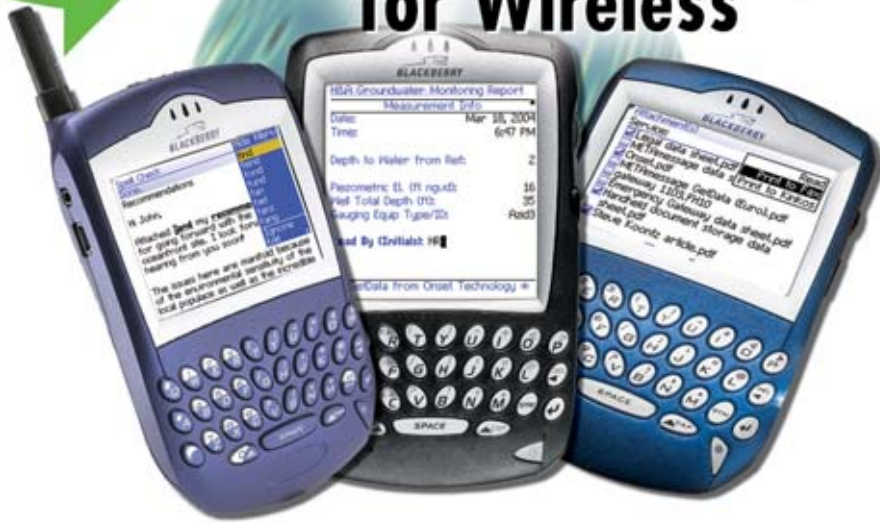


METAmessag[®]e

for Wireless



**Handheld access
to the enterprise**

DATA

“If your shop supports BlackBerries or other text-messaging services, you need METAmessag[®]e — and you need it today!”

InfoWorld

Send status reports and measurements with forms easily customized for your data requirements.



Access call information and incident histories, and search documentation and technical bulletins.



Get the latest customer data from virtually any CRM or sales force automation system.



METAmessag[®]e lets your BlackBerry[®] handheld interact with:

- **ERP/CRM Systems**
- **Custom Enterprise Applications and Databases**
- **Document Management Systems**
- **and more...**

METAmessag[®]e for Wireless – Data is a simple yet powerful solution to allow mobile professionals access to their important office data systems from their BlackBerry[®] handhelds. Sales people can retrieve CRM data; consultants can access corporate documents; the possibilities are endless.

METAmessag[®]e has an easy-to-use client, with simple menus and forms, enabling users to access important data while on the road. Administrators get a fast and simple way to provide their BlackBerry[®] users connectivity to virtually any enterprise system. Implementation can be done in days, requiring no custom development.

**Contact Onset for details at
int_sales@onsettechnology.com**



www.onsettechnology.com

METAmesssage for Wireless – Data

METAmesssage Data lets mobile workers connect with virtually any information source — from custom-designed SQL/ODBC databases and Web Service enabled systems to over 180 enterprise applications such as Siebel and SAP.

METAmesssage uses a scalable, open architecture which leverages existing messaging infrastructure — a dependable platform for future growth.

The simple, intuitive, forms-based client application lets users request and enter data without worrying about losing coverage in the middle of a query — forms are stored and then forwarded when coverage is available.

- METAmesssage is designed for fast implementation and easy maintenance. Setup wizards get you up-and-running quickly with fast user-list imports from Exchange global address lists (GAL) and Domino address books.
- Automatically updates and synchronizes user lists.
- Can use either email transport or the Mobile Data Service of the BlackBerry Enterprise Server®.
- Operates securely behind the firewall on a Windows NT/2000 server. Requires Windows NT 4.0/2000, 500 MHz CPU, 256MB RAM with Exchange, 512MB RAM with Domino.

End User Experience

Mobile professionals, while out of their office, for example onsite with a customer, can use their BlackBerry® handheld and METAmesssage to quickly access and update key information from corporate information systems.

Data access functionality is transparent to the end user who simply selects a form, fills out the required fields, and clicks Submit. The METAmesssage server receives the request, communicates with the data source, and sends the result back to the user.

Data Access Connectors

METAmesssage accesses enterprise data sources via:

- Generic data connectors such as SQL-ODBC/JDBC or Web Services;
- Application-specific connectors to leading enterprise systems;
- Industry-standard connectors for the most common data source types;
- Custom connector developed for a proprietary system used at a customer site.

Generic connectors

- SQL/ODBC
- Web Services
- Email Output
- Exchange Public Folder
- LDAP
- Web Lookup
- Software Development Kit (for customer-built connector)

Application-specific connectors

- Advanced Productivity Software - DTE
- Best Software - Carpe Diem
- Interface Software - Interaction
- Hummingbird - DM
- Interwoven - Worksite
- MDY - FileSurf
- Microsoft – SharePoint

Third-party integration software

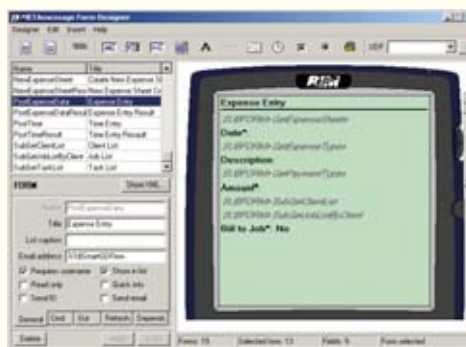
- Jacada (connectors to legacy systems)
- Sabratec (connectors to legacy systems)
- Tibco (connectors to ERP/CRM systems)

METAmesssage Forms Designer

The METAmesssage forms designer lets a solution provider or administrator custom-design forms appropriate for the needs of the particular application. The intuitive UI provides a fast way to layout fields as well as edit queries.

4 Easy Steps to BlackBerry® Database Connectivity:

1. Design a form.
2. Configure a database connection.
3. Add required database queries.
4. Distribute the new forms wirelessly to the clients.



Security

Due to the stringent demands for security when handling sensitive corporate information, Onset has worked closely with wireless device and solutions manufacturers to ensure that the METAmesssage for Wireless solution is compliant with or surpasses industry standards.

Security settings can be defined when creating a form that requires additional encryption. This added security protects the form

submissions and resulting information — both over the wireless network as well as behind the corporate firewall. Each METAmesssage request is encrypted with a different key to further protect the information.

Access to the data source is done behind the firewall, and METAmesssage uses the security schemes employed by the enterprise database or application.

Act now! Visit www.onsettechnology.com or email int_sales@onsettechnology.com